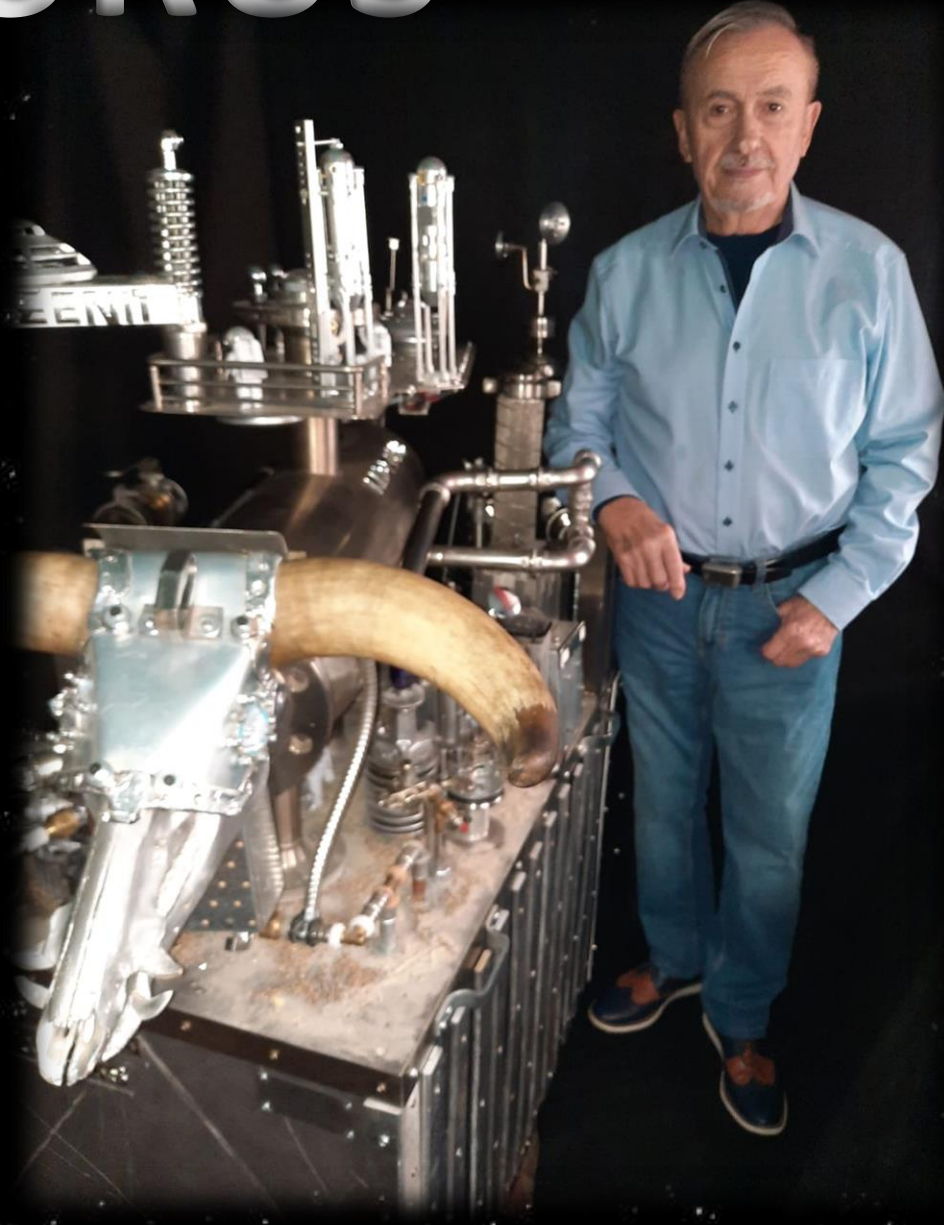


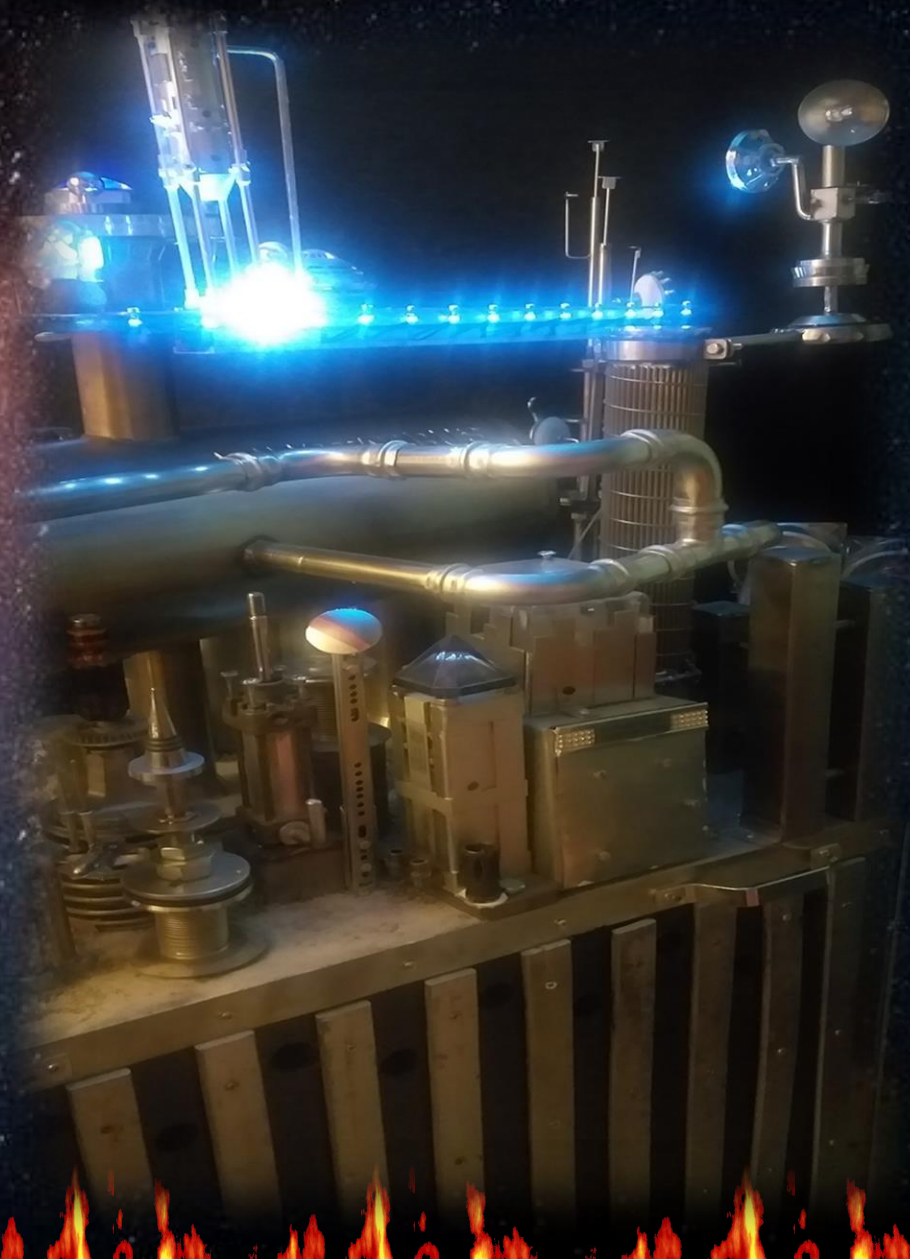
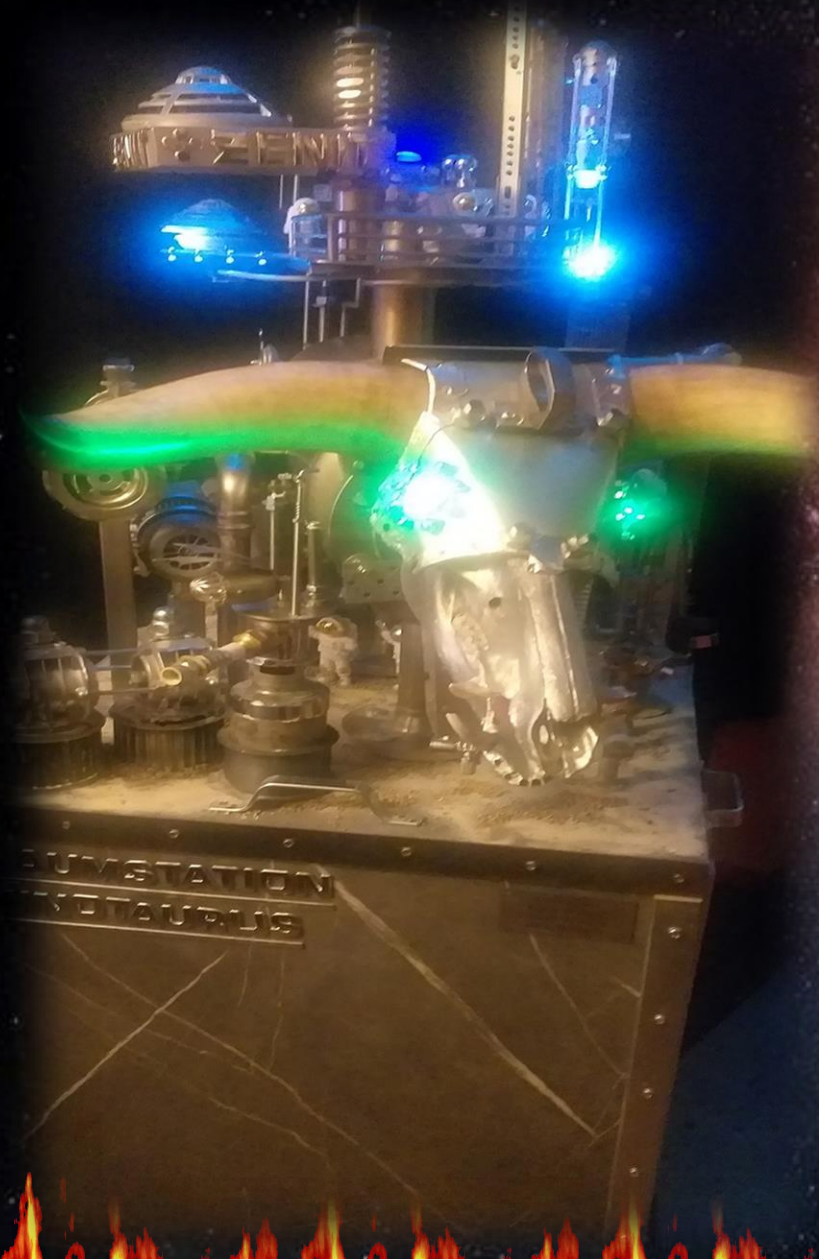
# MINOTAURUS

Art by Klaus Knauer



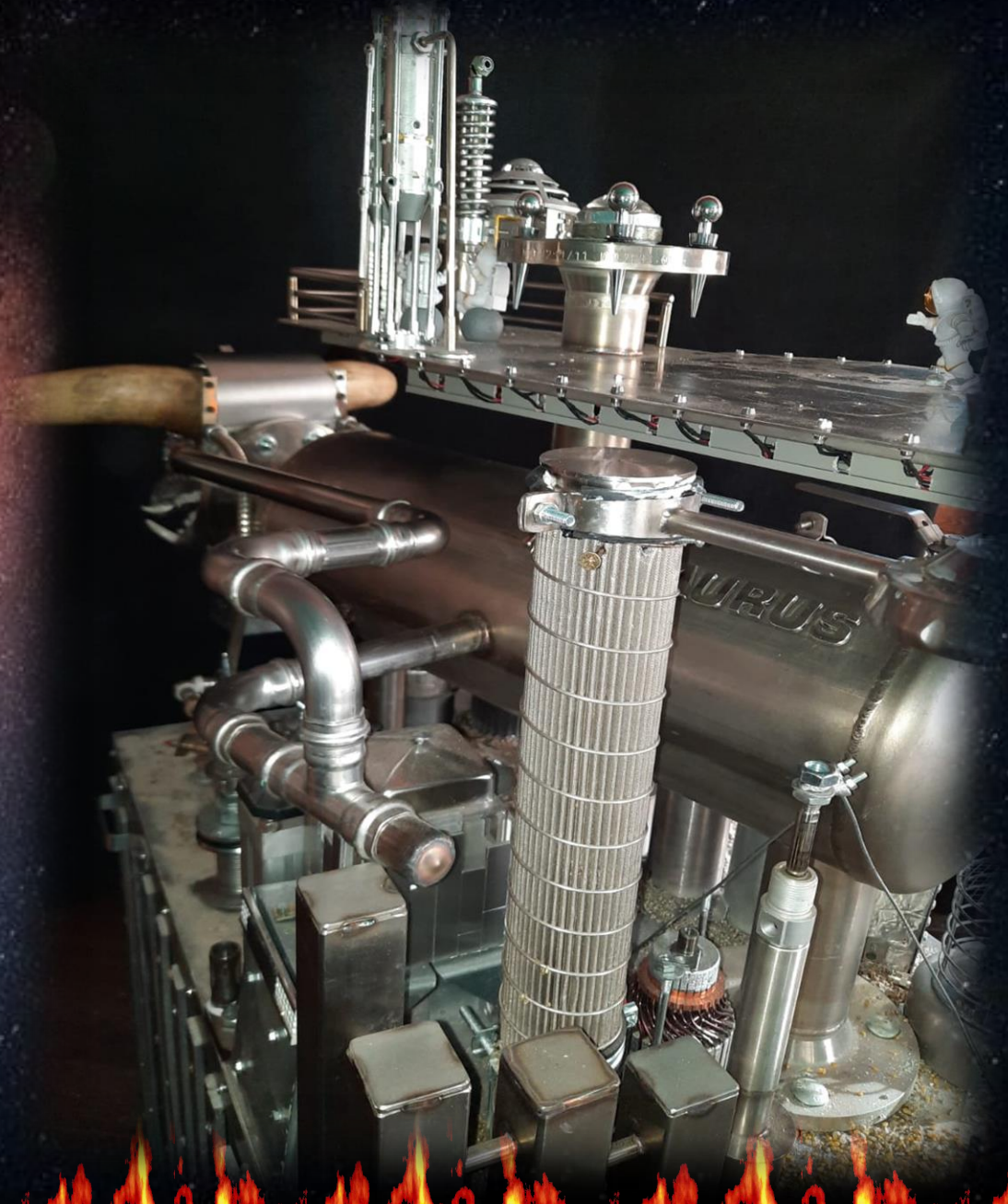


# The Space station „MINOTAURUS“





# The Space station „MINOTAURUS“



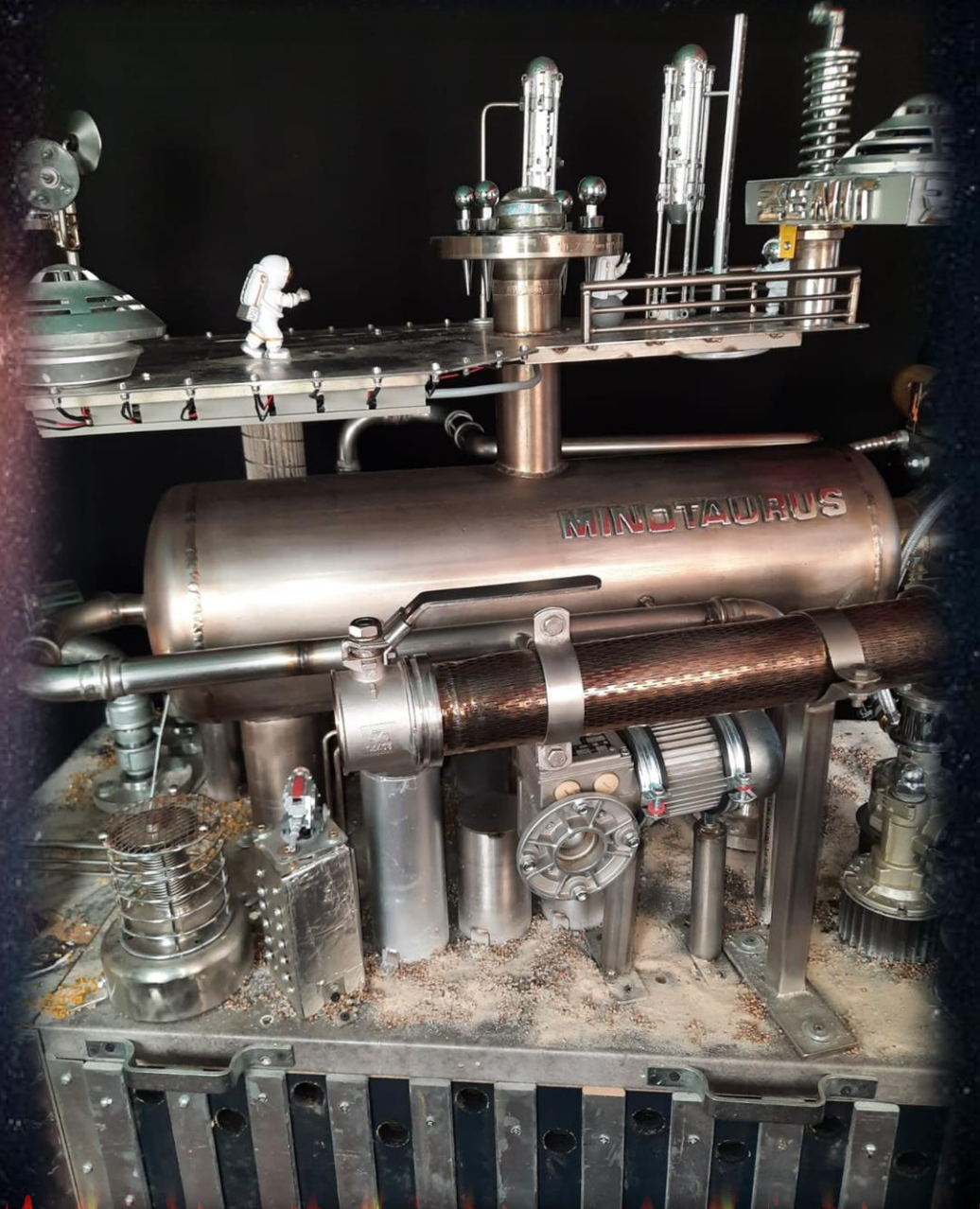


# The Space station „MINOTAURUS“





# The Space station „MINOTAURUS“





# The Space station „Minotaurus“



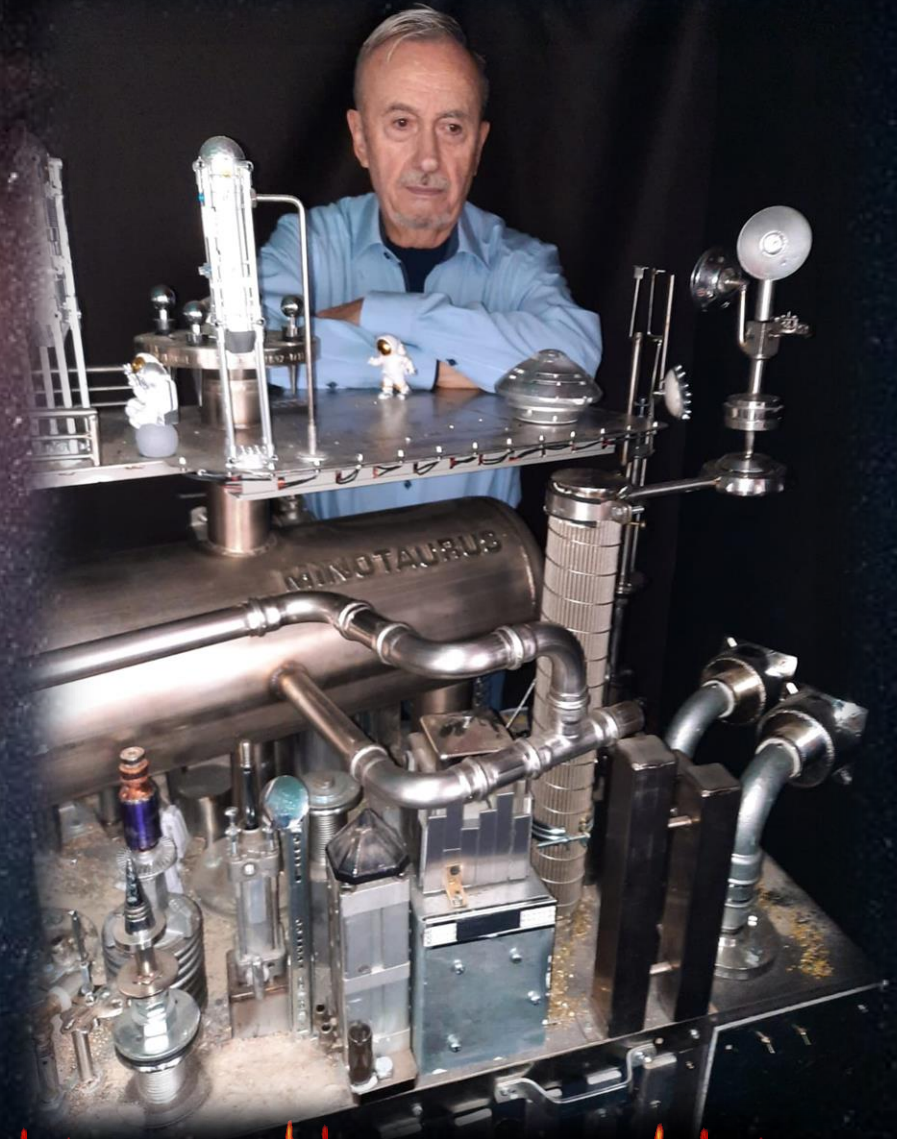


# The Space station „MINOTAURUS“



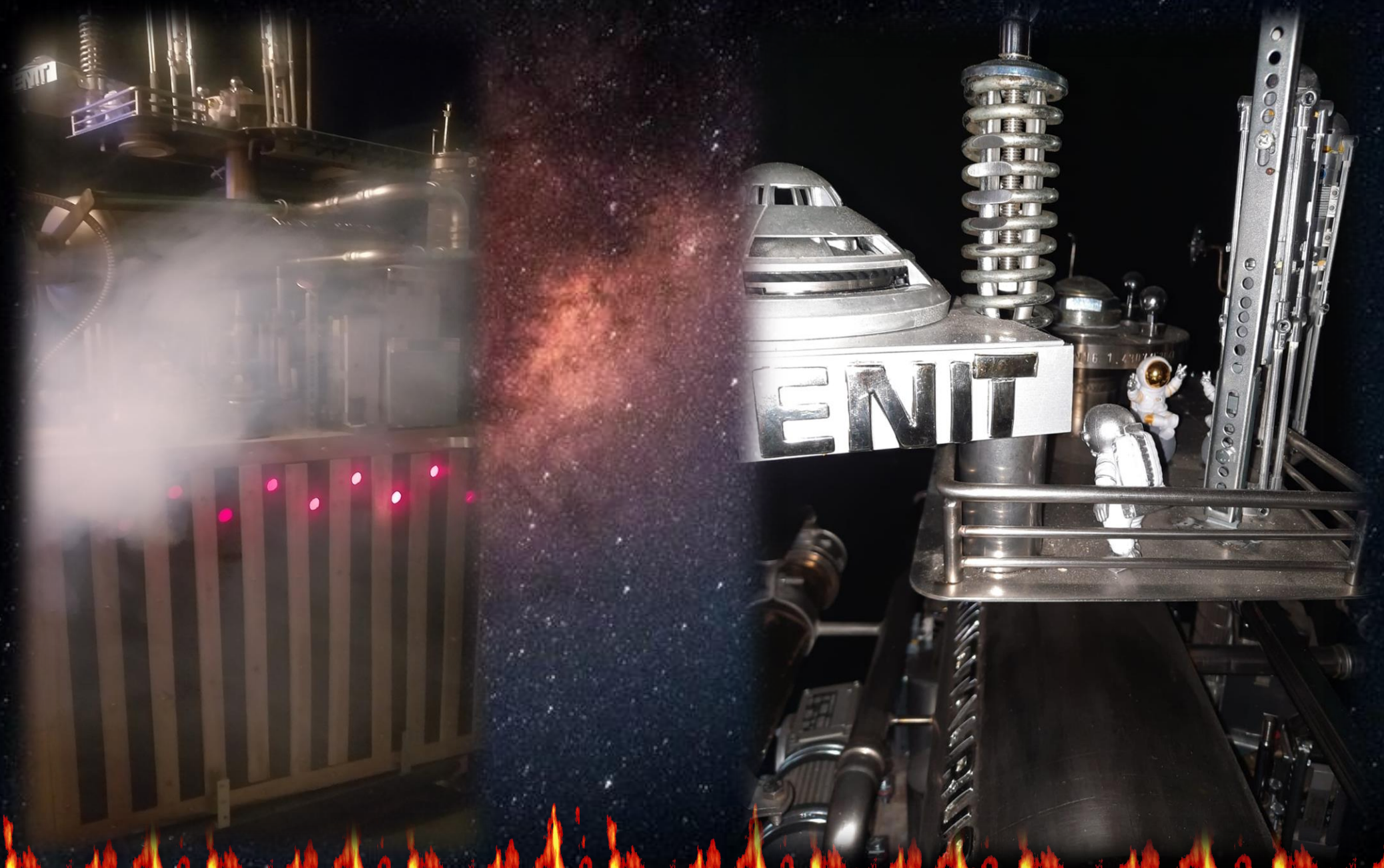


# The Space station „Minotaurus“



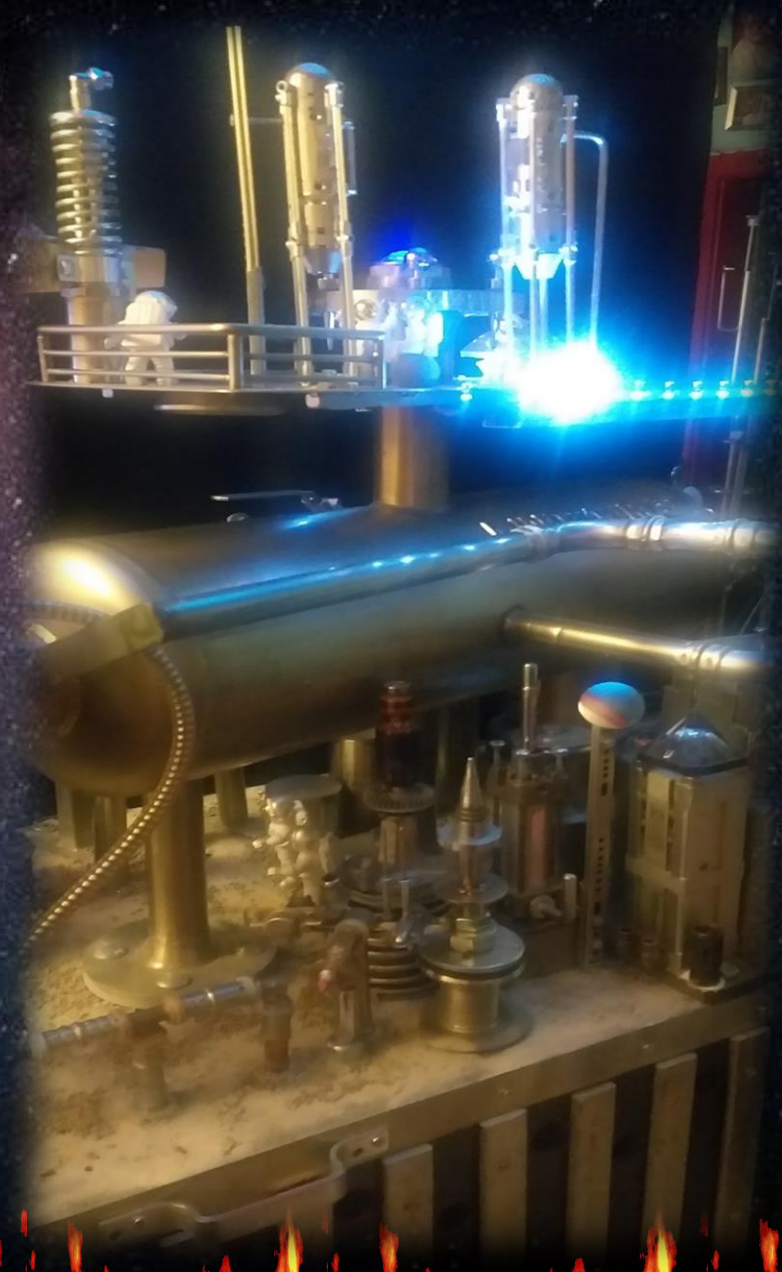
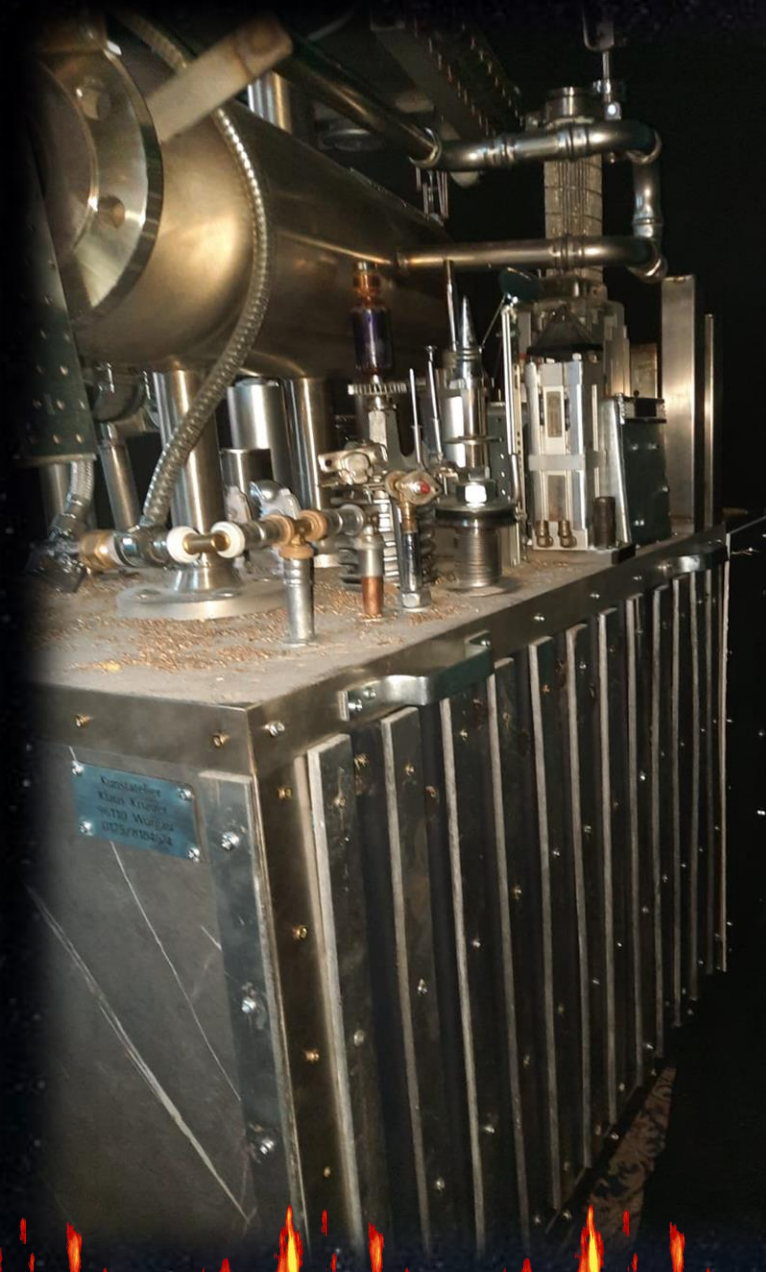


# The Space station „Minotaurus“





# The Space station „Minotaurus“





# The participants in the project „Space station - MINOTAURUS“

**Stainless steel – welding technology:** Johannes Hauptmann, Burglesau

**Electronic:** Timo Volpert, Fuchsstadt/bei Hammelburg und Kuno Geiger, Niefern-Öschlbronn

**Material procurement:** Mario Brehm, Demmelsdorf

**Subcontractual organization:** Christian Stöcklein, Burglesau

**Head of advertising and presentation:** Sybille Knauer, Würgau

*I would like to thank the people involved for their support.*

*Klaus Knauer*

**[www.kunstatelier.biz/minotaurus](http://www.kunstatelier.biz/minotaurus)**

## **Surces:**

Sound: [https://www.youtube.com/watch?v=\\_WoPLBc6d5A](https://www.youtube.com/watch?v=_WoPLBc6d5A)

Backgrounds: <https://www.pexels.com/de-de/foto/milchstrassenfotografie-2312040> - [https://de.freepik.com/fotos-kostenlos/galaxienachtlandschaft\\_13140066.htm](https://de.freepik.com/fotos-kostenlos/galaxienachtlandschaft_13140066.htm)

Flames: <https://usagif.com/gif/fire-57/>



# Function and structure of my sculpture “Space Station - Minotaurus” - Page 1/5

## Upcycling as an artistic representation

About 90% of this material I used for this sculpture came from dumpsters that I collected over a period of about 4 to 5 years without knowing what would come of it.

With some metal parts, I first had to disassemble them before assembly, research the inner workings for technical use, clean them and, if possible, assemble them into a complex overall picture, design them sensibly and place them according to the intended use. This is how my space station “Minotaur” was created after 5 months of work.

As a whole you can see: In the upper section the illuminated runway, antennas, launch pad with 2 rockets, entry hatch under a glass dome with the lift underneath, as well as the responsible shift personnel and a manned space glider.

Inside the station is the computer technology, which is operated by around 100 staff. The pipelines are necessary for the supply of all types of energy.

Located in the front part to the northeast, a pivoting take-off and landing area with a hydraulic lifting device for the flying disc platform was created. This extraordinary, high-tech development is not only used in the airspace, but can also be used under water.

The “Zenit” flying disks located on the upper deck, a further development in space travel, serve the research team as an escort and as a scout troop function in space.



Their mission is to search for new worlds in an as yet unexplored galaxy.

The space station “Minotaur” is stubbornly sticking to its course, even though it recently got caught in a sandstorm.

In the Minotaur's head is the command center with warning sensors located in the Minotaur's eyes.

Stationary power generators, fuel tanks, various silos and the large residential complex were built under the main body. Special antennas were installed to receive electromagnetic waves.

Strategically secured at position 10:30 with a 20.8 cm anti-aircraft gun, which can boast a reliable hit rate of 99.9%.

If necessary, the anti-aircraft gun can be equipped with a nuclear warhead, a technical masterpiece of military development for the necessary defense against any aggression of enemy attacks.

A terrible weapon for the enemy who falls into the target of this military technology, who wants to disrupt and violently seize freedom for life, research and science in space as well as on earth.



The most effective weapon for defending the space station is the anti-aircraft gun "Wotan," which is located under the head of the "Minotaur."

The most powerful weapon of all time, this prototype is impressive and ostentatious, equipped with an automatic early warning system and a laser cannon that targets and destroys them at several times the speed of light.

Further technical data on the weapons are subject to the strictest secrecy of the Ministry of Defense, which is now headed by a high-ranking general.

However, it has already been revealed that experienced military personnel and selected specialists are taking over the leadership of these weapons systems, and that they want to keep their distance from civilians, politicians with the lowest level of education, corrupt bankers and the like.

The technical director said that this weapon is expected to provide absolute safety in the space station for the crew and for the space travel company.



At the end of the space station there is a huge ventilation system and an integrated smoke machine that would guarantee complete camouflage in the event of an attack.

Technical laboratories, medical wards with fully equipped operating rooms, production facilities for producing fuel, engine rooms, transformers that guarantee a secure power supply for electrical equipment, and much more are located on several floors in the basement.

Only people with special authorization that corresponds to the status of security level 1 - top secret have access to these individual areas.

Thus, the "Space Station Minotaur" finds its way into space, its mission characterized by peaceful intentions.



### Construction:

The whole thing was built on a stable hollow body with chipboard panels that are 20 or 40 mm thick.

Metal handles are mounted on all outsides.

The sculpture was firmly anchored with 8 mm machine screws on two pieces of 40 mm chipboard, which forms an overall body with external dimensions of L approx. 1400 mm, W approx. 700 mm and H 1600 mm, on four rubber swivel castors that hold a 200 kg Guarantee load capacity, developed.

With 3 large lighting sources, one on the runway and two under the main body, which can be controlled in different colors using a remote control , there are additional electrical installations such as the border of the landing and take-off runway on the upper deck, the illuminated entrance to the elevator under the glass dome and in the eyes and throat of the Minotaur.

**With this I conclude my description and wish the crew a good flight and peace on earth.**